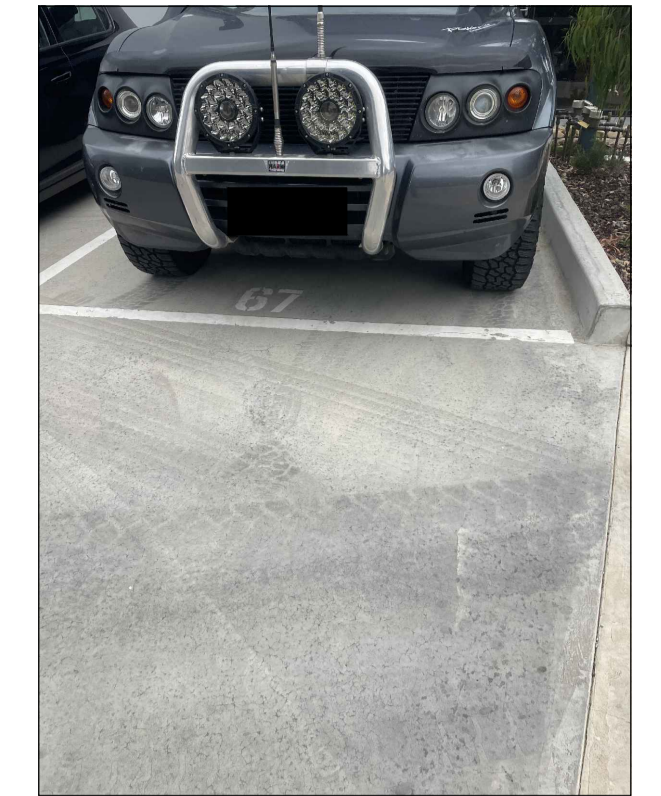
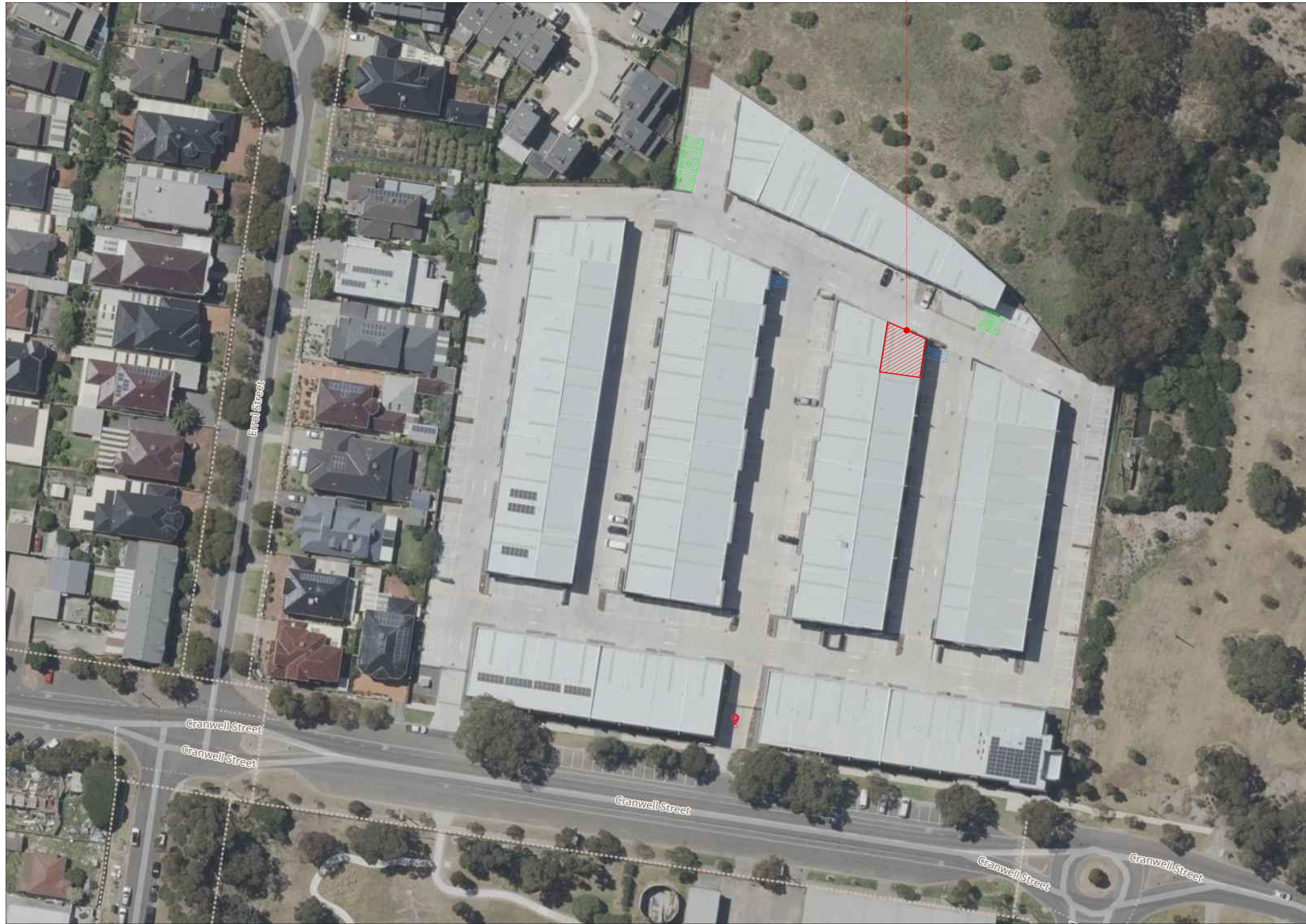
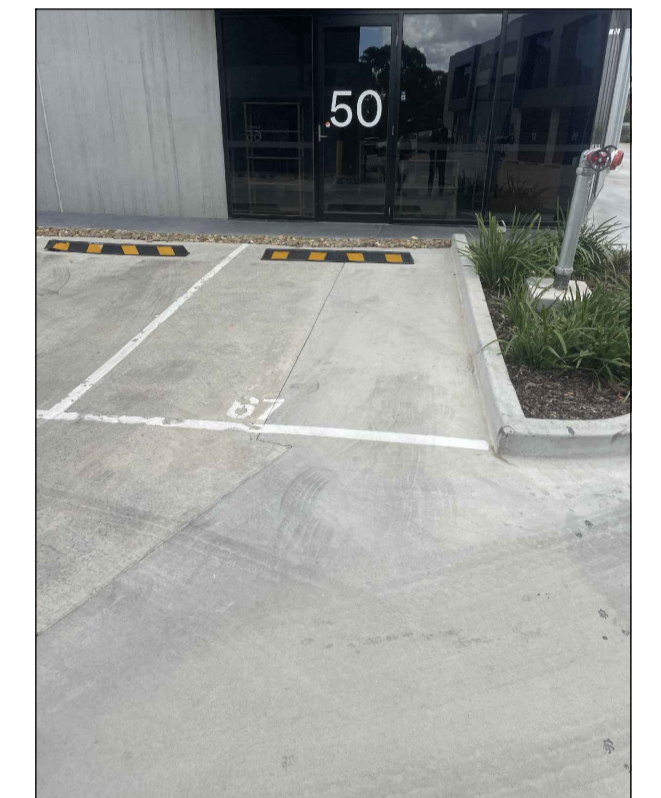


CITY OF MARIBYRNONG ADVERTISED PLAN

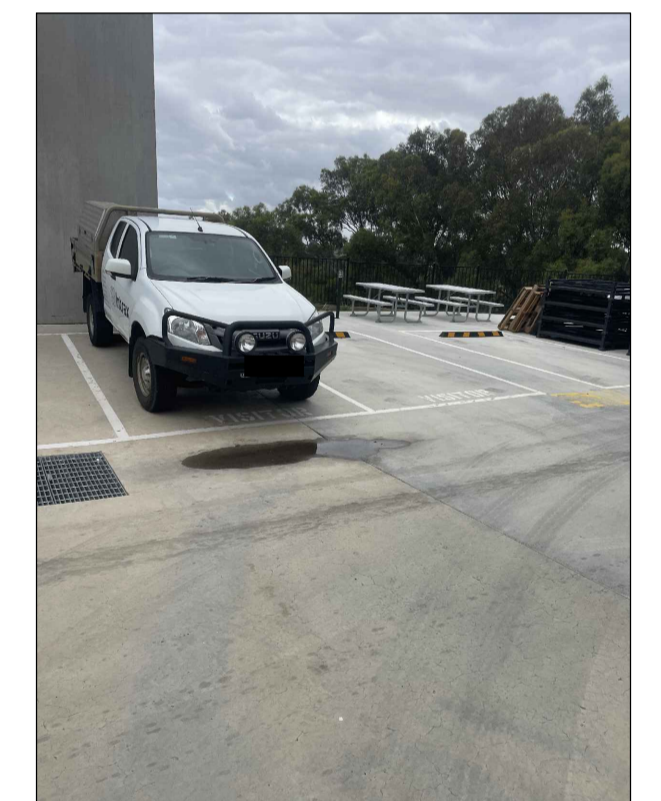
67/90 CRANWELL STREET, BRAYBROOK



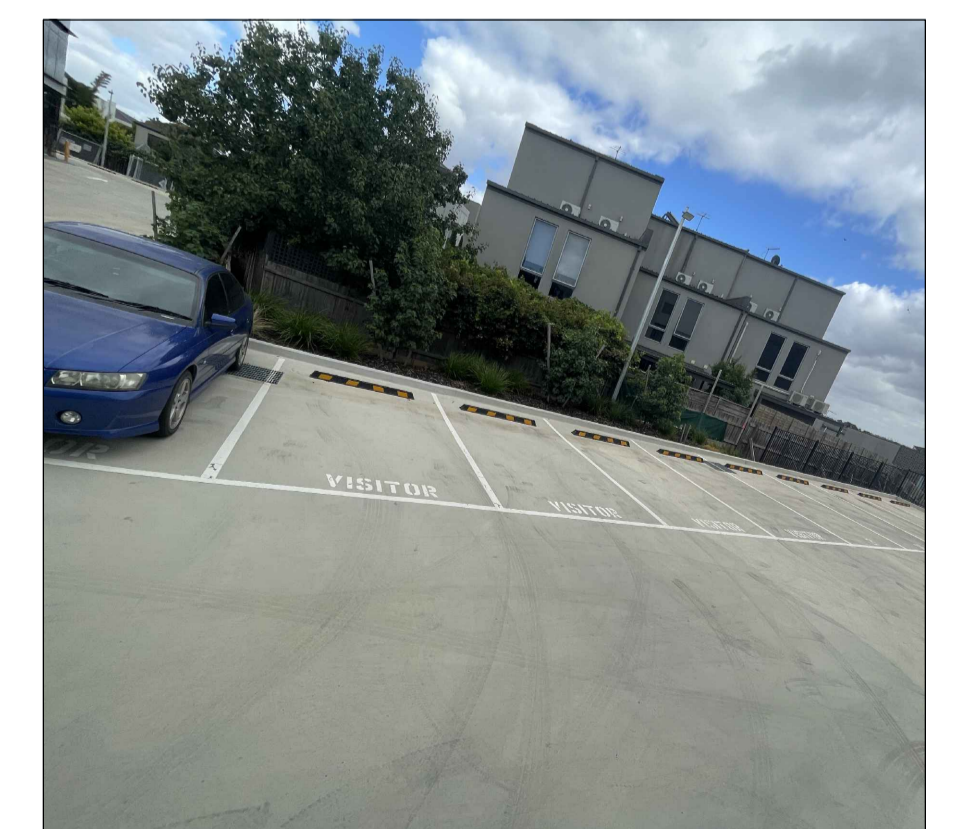
(A)



(B)



(C)



(D)

LOCALITY PLAN SCALE 1:500

LEGEND	
SUBJECT FACTORY/WAREHOUSE	
DEDICATED WAREHOUSE CAR PARKING	
CLOSE PROXIMITY VISITOR CAR PARKING	

COPYRIGHT & DISCLOSURE:
THESE PLANS ARE EXCLUSIVELY OWNED BY
TJR PROJECTS PTY LTD AND CANNOT BE
REPRODUCED OR COPIED, EITHER WHOLLY OR IN
PART, IN ANY FORM WITHOUT WRITTEN
PERMISSION OF TJR PROJECTS PTY LTD.
NOTE: DO NOT SCALE. WRITTEN DIMENSIONS TAKE
PRECEDENCE OVER SCALES.

TJR PROJECTS
Architectural Building Design & Drafting

FOR: CLIENT
AT: 67/90 CRANWELL ST,
BRAYBROOK, 3019
PROJECT: WAREHOUSE CONVERSION
STAGE: TOWN PLANNING



JOB NO: 25CRANWELL
SCALE: 1:500
COUNCIL: MARIBYRNONG
DRAWN: R.R.
DATE: 12.02.25
SHEET: A1
REV: 1 OF 2
REVISION: DATE:

