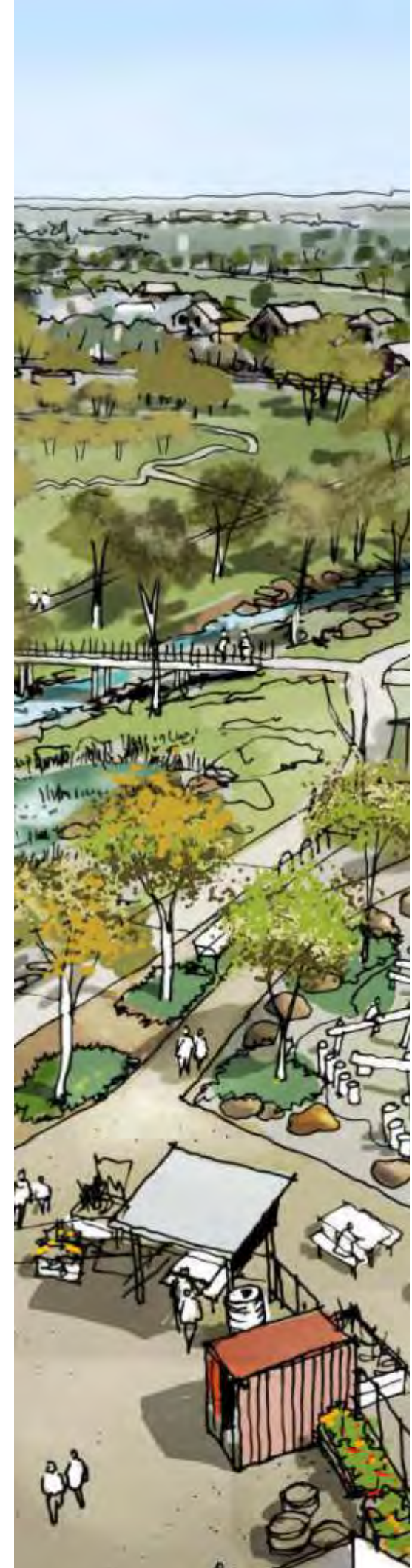


STONY CREEK

FUTURE DIRECTIONS PLAN 2020

DUKE STREET, BRAYBROOK TO HYDE STREET, YARRAVILLE



FEBRUARY 2020



CONTENTS

VISION & STRATEGIC CONTEXT	p.1
KEY OBJECTIVES	p.2
FUTURE LAND ACQUISITIONS DUKE STREET - CALA STREET	p.3

SECTION PLANS

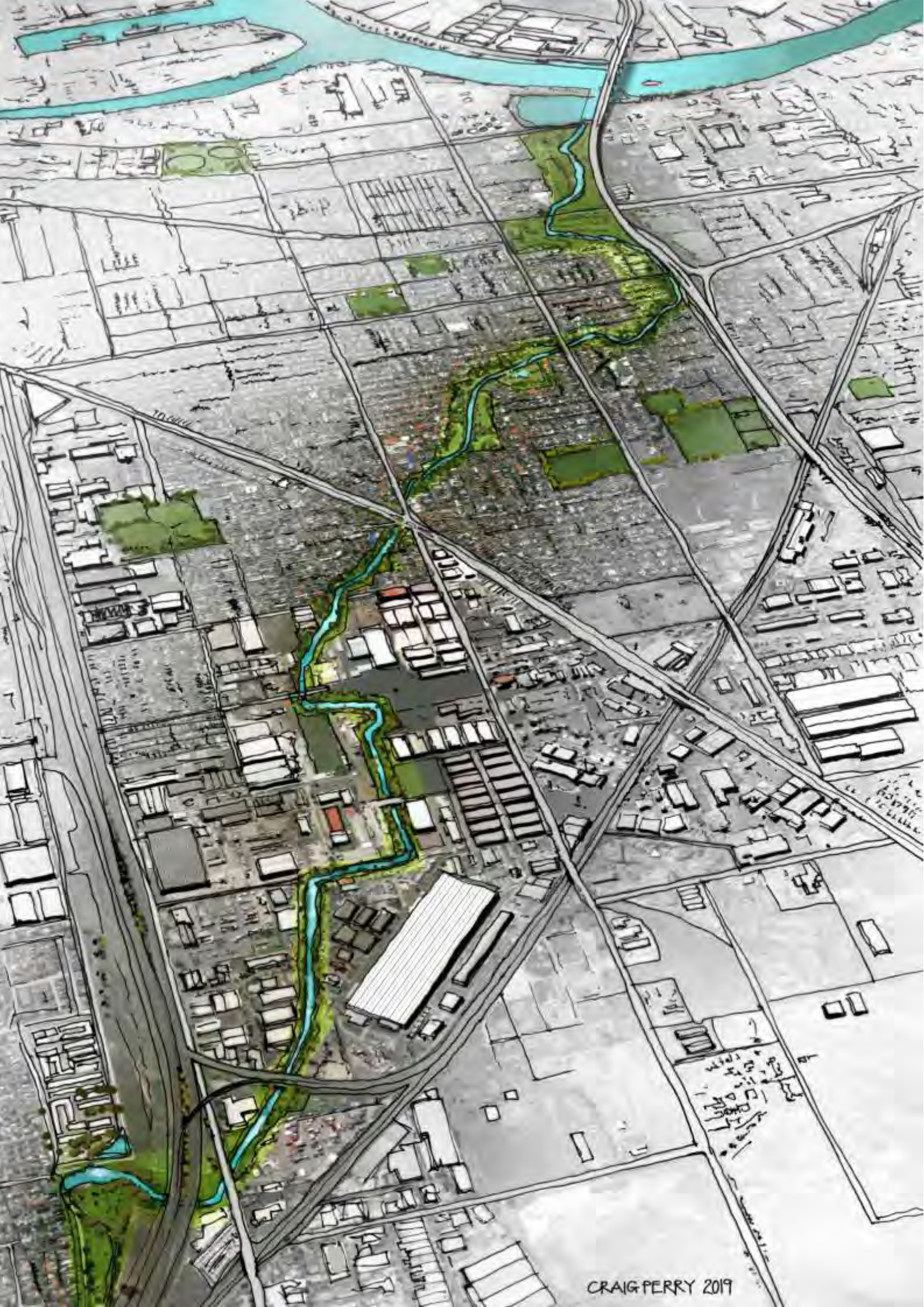
	1 DUKE STREET - QUARRY ROAD Improve water quality and connections	p.4
	2 QUARRY ROAD - PARAMOUNT ROAD Unlock Stony Creek to the Public	p.6
	3 PARAMOUNT ROAD - CALA STREET Improve habitat and connections	p.7
	4 CALA STREET- GEELONG ROAD Improve recreation and connections	p.9
	5 SOMERVILLE ROAD - DREW STREET BRIDGE CRUICKSHANK PARK Improve safety and recreation	p.10
	6 DREW STREET BRIDGE - FRANCIS STREET CRUICKSHANK+MCNISH RESERVE Improve habitat, safety and recreation	p.11
	7 FRANCIS STREET - WILLIAMSTOWN RAIL LINE Naturalising Stony Creek	p.13
	8 HYDE STREET RESERVE Improve recreation and connections	p.14

IMPLEMENTATION PLAN	p.15
---------------------	------

ARTISTS IMPRESSIONS

DUKE STREET RESERVE Artists impression #1	p.5
INDUSTRIAL INTERFACES Artists impression #2	p.8
CRUICKSHANK + MCNISH RESERVE Artists impression #3	p.12





CRAIG PERRY 2019

VISION STATEMENT

Stony Creek will run through a continuous corridor of public open space, rich in habitat and biodiversity, linked by a connected trail network and quality park amenities which support community recreation and enjoyment. Spaces will be safe, accessible and welcoming, they will encourage people to engage with the natural and cultural heritage of this high valued urban waterway.

STRATEGIC CONTEXT



MARIBYRNONG CITY COUNCIL COUNCIL PLAN 2017 – 21

Guides the planning, development, resourcing and provision of services to the community over a four year period. Related Strategic Objectives include:
Healthy and inclusive communities: Provide and advocate for services and facilities that support people's wellbeing, healthy and safe living, connection to community and cultural engagement
Quality places and spaces: Develop built and natural environments that are well maintained, accessible and respectful of the community and neighbourhoods.
Mobile and connected city: Plan and advocate for a safe, sustainable and effective transport network and a smart innovative city.
Clean and green: Strive for a clean, healthy city for people to access open spaces, cleaner air and water and respond to climate change challenges.

MARIBYRNONG CITY COUNCIL OPEN SPACE STRATEGY 2014

Provides strategic direction for planning, provision and design of open space across the city. Recommendations for sc include:

- Establish a continuous open space corridor along the creek.
- Continue to improve natural character and values of the creek.

PLAY MARIBYRNONG PLAYGROUND IMPROVEMENT STRATEGY

Provide and improve network of playgrounds which provide a variety of fun, exploration and challenge for children of all ages and abilities.

Well designed and maintained play spaces will help young people and local communities to play and develop socially, physically and emotionally.

MELBOURNE WATER STONY CREEK REHABILITATION PLAN

Developed in partnership with Melbourne Water, Maribyrnong City Council and EPA and community to address rehabilitation and protection of Stony Creek following industrial fire in August 2018. Provides guidance for delivering the community's vision and long-term aspirations for Stony Creek through collaborative partnerships. Identifies key actions for delivery by local and state government agencies under five themes of: Waterway Health; Water Quality; Access and Connectivity; Amenity and Education and Community Participation.

STONY CREEK STORMWATER TREATMENT AND HARVESTING OPPORTUNITIES MAY 2019

Identifies opportunities for stormwater treatment systems and stormwater harvesting through raingardens and wetlands in open space. Quantifies cost and benefits including:

- Improved amenity, recreation and biodiversity opportunities
- Removal of sediment and pollutants from creek.
- Reuse of stormwater for irrigation

DRAFT MARIBYRNONG BICYCLE STRATEGY 2019 - 2025

- Guides the next ten years of investment in cycling in Maribyrnong.
- Aims to increase cycling through increased physical separation and safer speeds.
- Recommends connecting the Stony Creek Trail between Paramount Road and Federation Trail.

WEST TRAILS WESTERN METROPOLITAN REGION TRAILS STRATEGIC PLAN

Connect Stony Creek Trail between Cruickshank Park and Hyde Street
 Provide wayfinding and behavioural signage to the length of Stony creek
 Connect Somerville Road to Cala Street

WEST FOOTSCRAY AND TOTTENHAM PRECINCT FRAMEWORK PLANS 2019

- Guides planning for the future of these Employment Precincts
- Identifies poor amenity and connectivity along Stony Creek.
- Opportunities for improved active transport network and connections along the creek.
- Provides guidelines for enhanced interfaces with industrial uses including landscape setbacks and improved permeability/access.

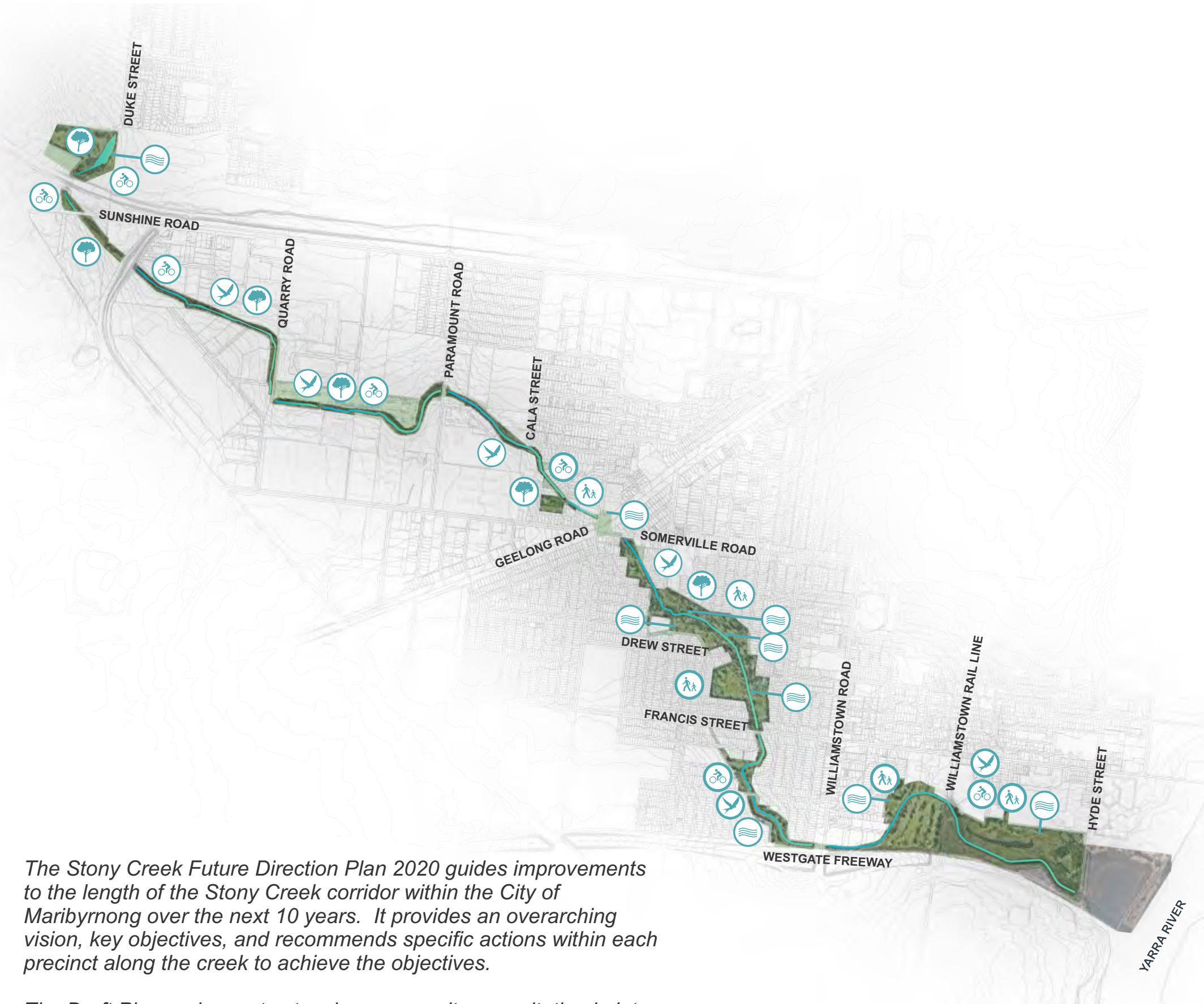
MARIBYRNONG URBAN FOREST STRATEGY 2018

Provision of natural shade and shelter for people
 Reduced air, water and soil pollution
 Improved amenity and aesthetics of public open space, encouraging people to be active

STONY CREEK FLORA AND FAUNA IMPACT ASSESSMENT 2019

Identifies 37 fauna taxa across three sites, 28 of which are indigenous species.
 Estuarine areas of Stony Creek provide the highest quality of habitat for a wide range of fauna, particularly migratory and resident shorebirds.
 Potential for Stony Creek to support migratory birds upstream of Hyde Street Reserve

A total of 65 plant taxa were recorded in three sites, 41 of which are indigenous



The Stony Creek Future Direction Plan 2020 guides improvements to the length of the Stony Creek corridor within the City of Maribyrnong over the next 10 years. It provides an overarching vision, key objectives, and recommends specific actions within each precinct along the creek to achieve the objectives.

The Draft Plan underwent extensive community consultation in late 2019 to inform the actions and their prioritisation. The resulting Implementation Plan identifies a Priority and Timeframe for each action. The indicative timeframes are: Short Term (1 – 3 years), Medium Term (4 – 6 years) and Long Term (7 – 10 years)

KEY OBJECTIVES



CREATE A CONTINUOUS OPEN SPACE CORRIDOR WITH IMPROVED CONNECTIVITY

- Achieve public open space along the creek through land purchase and/or contributions
- Work towards a continuous trail network along the creek
- Provide bridges where required to support connectivity (with lighting to link to street network)



IMPROVE WATER QUALITY AND COOL THE URBAN ENVIRONMENT

- Install stormwater treatment raingardens and wetlands
- Investigate reuse of stormwater for irrigation where possible
- Increase tree canopy and vegetation cover



ENCOURAGE A VARIETY OF RECREATION ACTIVITIES

- Provide improved facilities for informal and structured physical activity: ball courts, disc golf, BMX
- Improve playgrounds and expand nature play opportunities
- Retain current dog off-lead areas and restrictions



CREATE SAFE AND WELCOMING SPACES WITH ACCESSIBLE FACILITIES

- Provide improved park facilities and amenities for increased visitation
- Enhance wayfinding and interpretive signage
- Support a community led 'Discovery Trail' project



ENHANCE HABITAT AND BIODIVERSITY

- Increase creek bank planting
- Provide greater variety of indigenous plant species
- Advocate for naturalisation of concrete channel

FUTURE LAND ACQUISITION DUKE STREET - CALA STREET

LEGEND

- Land Parcels Private Ownership
- Land Parcels Public Ownership
- Existing Public Acquisition Overlay (Vic Roads)
- Future Public Acquisition Overlay for creek reserve
- Future Public Acquisition Overlay for road reserves
- Proposed Stony Creek Corridor (min. 30m)

Where public creek reserve is near the 30m existing width, adjacent land may be acquired at time of redevelopment through negotiation / as open space contributions



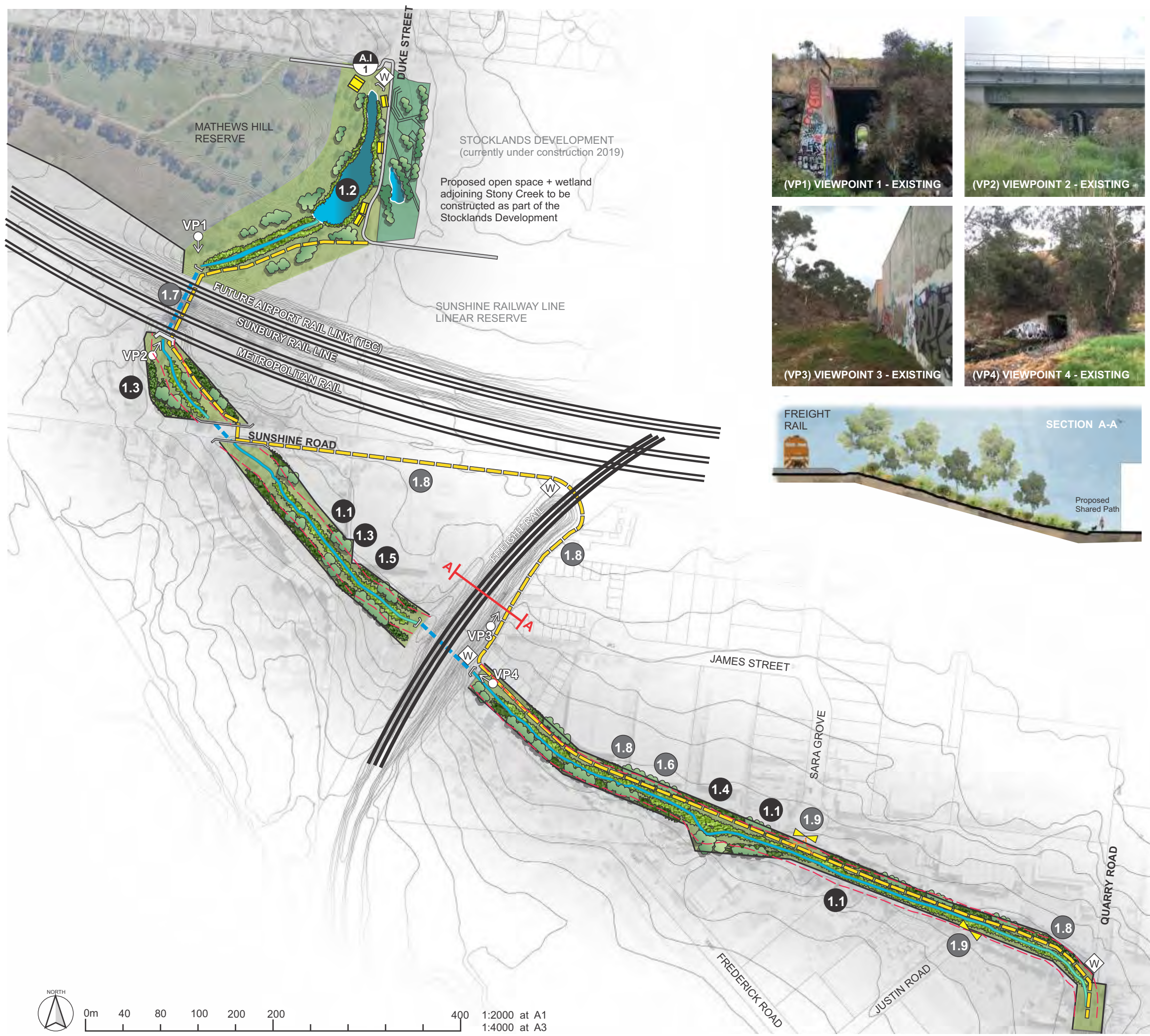
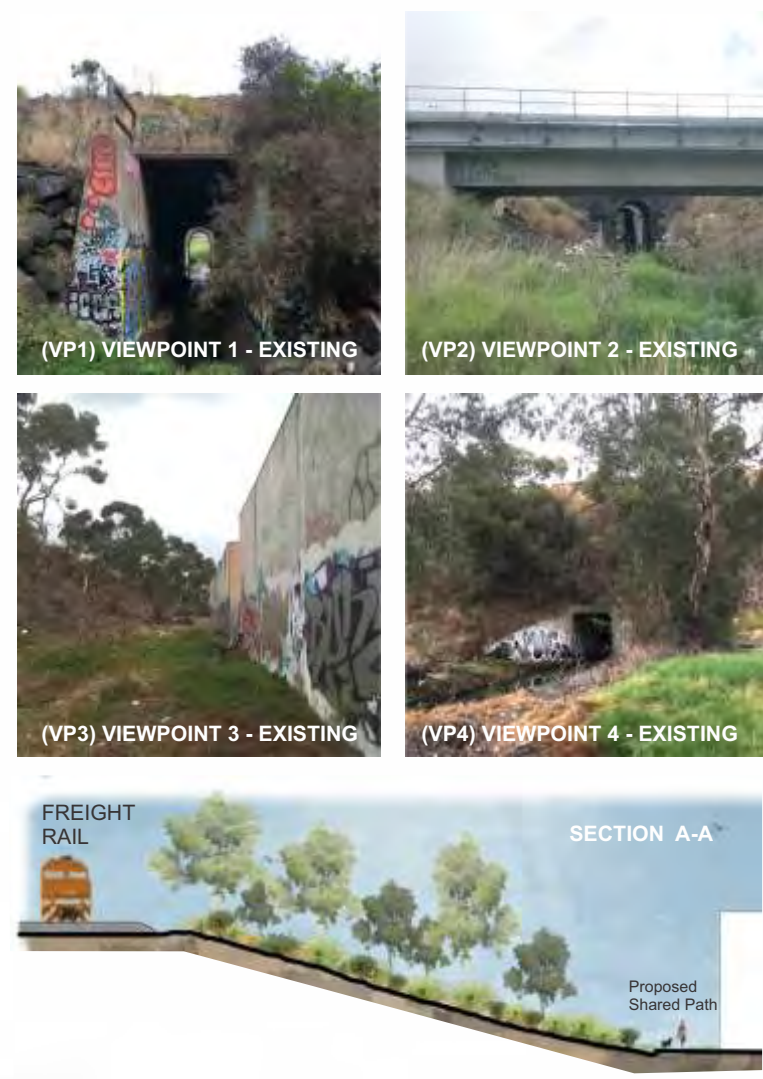
1 DUKE STREET - QUARRY ROAD

Improve water quality and connections



LEGEND

- PATHS & ACCESS**
- Existing 2.5m concrete shared path (Upgrade to 3m at time of renewal)
 - Proposed 3m wide concrete shared path
 - Proposed new sections of 1.5m wide concrete secondary footpath
 - Proposed new sections of informal 900mm wide gravel footpath
 - Proposed Stony Creek Corridor (min. 30m)
- PARK INFRASTRUCTURE**
- Proposed park seat
 - Proposed picnic table
 - Proposed wayfinding sign
 - Proposed maintenance vehicle gate
- TREES, PLANTING & SOFT LANDSCAPE**
- Proposed native trees planted in groups / copses of 3-7
 - Proposed creek-side planting utilising native shrubs and grasses
 - Proposed buffer planting with native shrubs and trees
- CREEK & WATER QUALITY INFRASTRUCTURE**
- Creek culvert - inaccessible to public road bridge
 - Proposed wetland / pond for stormwater treatment
 - Artists impression #1 (see p.5)



	ACTIONS	TIMEFRAME
HIGH PRIORITY	1.1 Develop and implement the Stony Creek Industrial Guidelines for adjacent properties	Short / ongoing
	1.2 Construct sedimentation pond and wetland south of Duke Street (Melbourne Water approvals required)	Medium
	1.3 Develop area for habitat provision with weed removal, tree and creek-side planting – (access approvals may be required until ownership or access agreement developed.)	Medium
	1.4 Investigate possible litter control measures	Medium
	1.5 Acquire land held in private ownership through open space contributions at time of redevelopment to create min. 30m corridor as shown on p.3	Long
MEDIUM PRIORITY	1.6 Weed control, tree and creek-side planting between Quarry Road and Freight line	Medium
	1.7 Advocate to State Government for a cycling and pedestrian link (bridge or tunnel) between Sunshine Road and Duke Street (potential to form part of Future Airport Rail works)	Medium
	1.8 Construct 3m wide shared path from Sunshine Road to Quarry Road (Victrack approvals required). Advocate to VicRoads for new signalised intersection across Sunshine Road	Long
	1.9 Improve access and maintenance connections at Sarah Grove and Justin Avenue.	Long

0m 40 80 100 200 200 400
 1:2000 at A1
 1:4000 at A3



Improve water quality through sedimentation basin located at Duke Street stormwater outlet and wetland in adjoining residential development

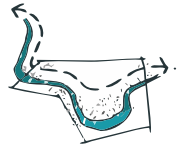
Promote activity and connectivity through shared user paths

- A** New park space and wetland to be constructed as part of the adjoining residential development
- B** Improved connectivity through Stony Creek
- C** Proposed sedimentation basin for water treatment
- D** Proposed creek-side planting for habitat improvements



2 QUARRY ROAD - PARAMOUNT ROAD

Unlock Stony Creek to the Public



LEGEND

PATHS & ACCESS

- Existing 2.5m concrete shared path (Upgrade to 3m at time of renewal)
- Proposed 3m wide concrete shared path
- Proposed new sections of informal 900mm wide gravel footpath
- Proposed splitter island for pedestrian access
- Proposed stony creek corridor (min. 30m)

PARK INFRASTRUCTURE

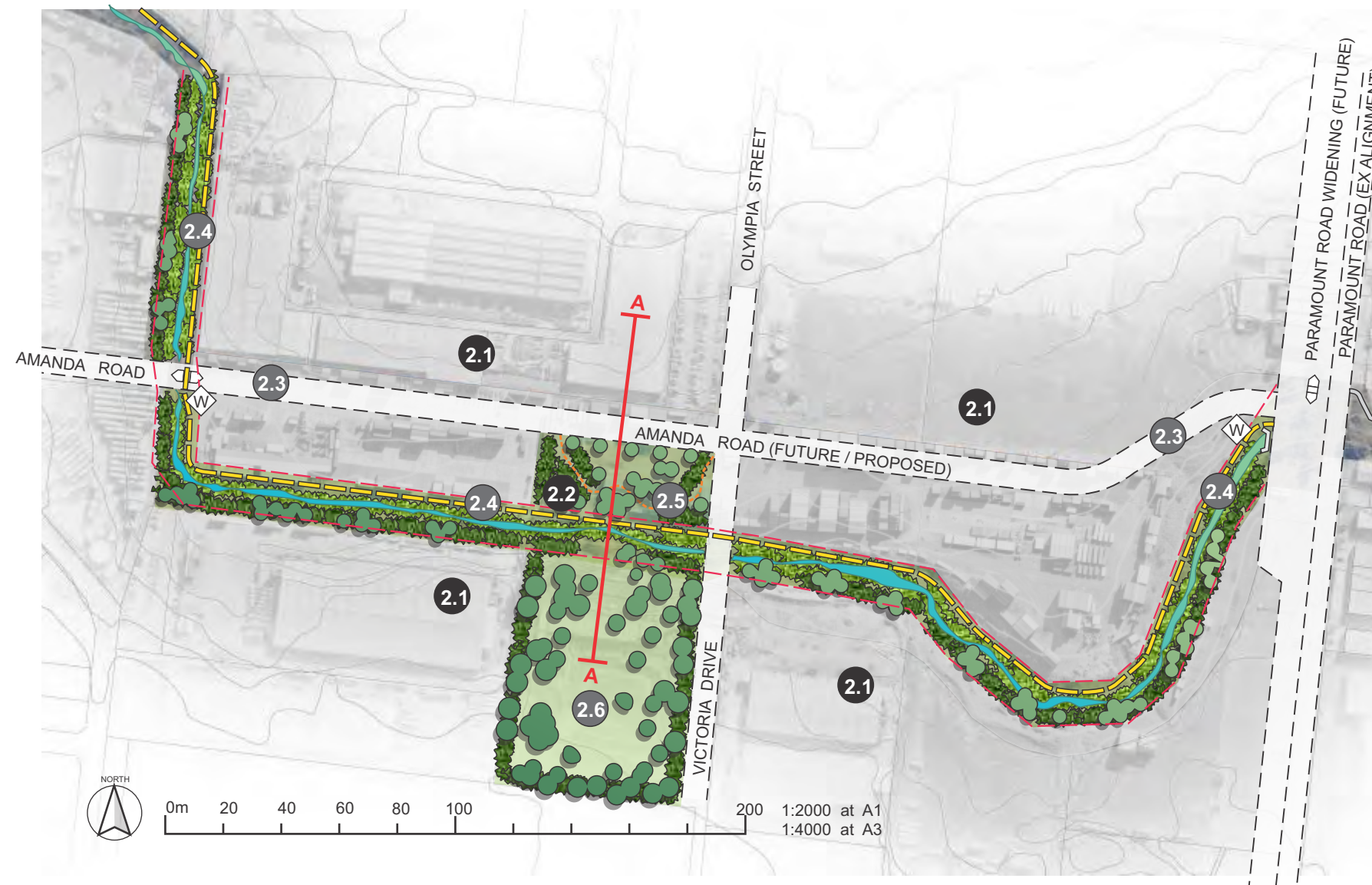
- Proposed wayfinding sign
- Existing maintenance vehicle access gate
- Proposed maintenance vehicle gate

TREES, PLANTING & SOFT LANDSCAPE

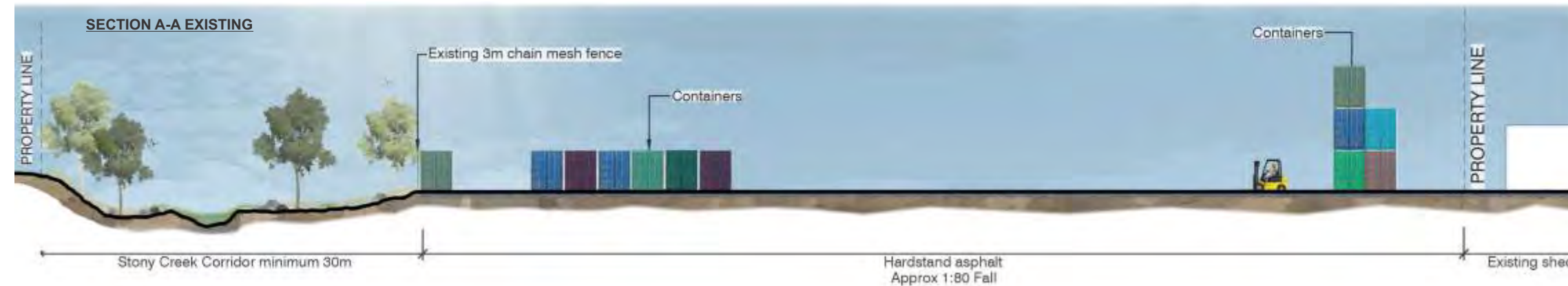
- Proposed native trees planted in groups / copses of 3-7
- Proposed creek-side planting utilising native shrubs and grasses
- Proposed buffer planting with native shrubs and trees

CREEK & WATER QUALITY INFRASTRUCTURE

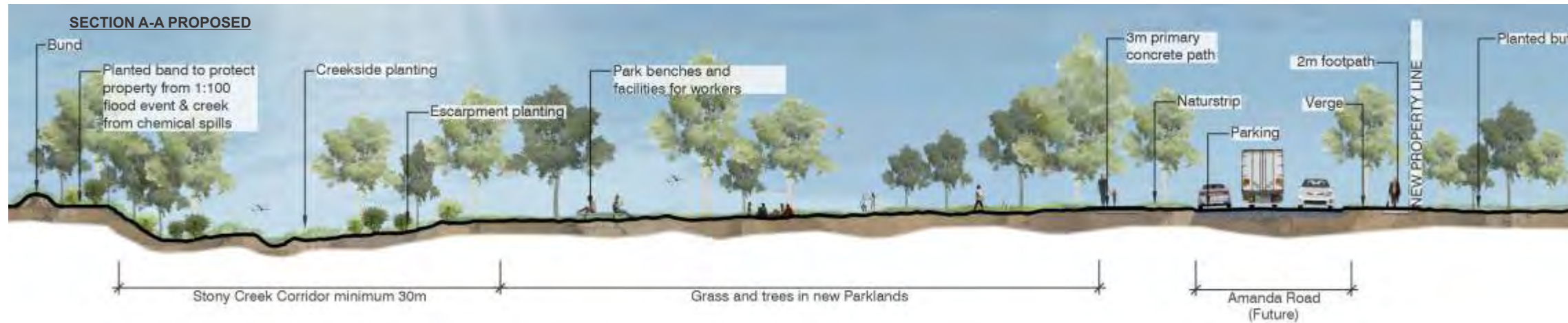
- Creek culvert - inaccessible to public



SECTION A-A EXISTING



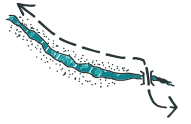
SECTION A-A PROPOSED



		ACTIONS	TIMEFRAME
PRIORITY	HIGH	2.1 Develop and implement the Stony Creek Industrial Guidelines for adjacent properties	Short / ongoing
	HIGH	2.2 Future land acquisition for open space and road reserves. Work with private land holder to purchase / acquire land for future creekside reserve as shown on p.3.	Medium
MEDIUM		2.3 Future potential roads, bridges and connections through Tottenham to improve business access/operation and Stony Creek connections	Long
		2.4 Construct 3m wide shared path from Quarry Road to Paramount Road	Long
		2.5 Design and develop creek-side reserve as a place for informal recreation, habitat and connections	Long
		2.6 Advocate for 420 Somerville Road to be rehabilitated (Fire Site) and handed over for future public open space	Long

3 PARAMOUNT ROAD - CALA STREET

Improve habitat and connections



PATHS & ACCESS

- Existing 2.5m concrete shared path (Upgrade to 3m at time of renewal)
- Proposed 3m wide concrete shared path
- Proposed stony creek corridor (min. 30m)
- Proposed footbridge

PARK INFRASTRUCTURE

- Proposed wayfinding sign
- Existing maintenance vehicle access gate

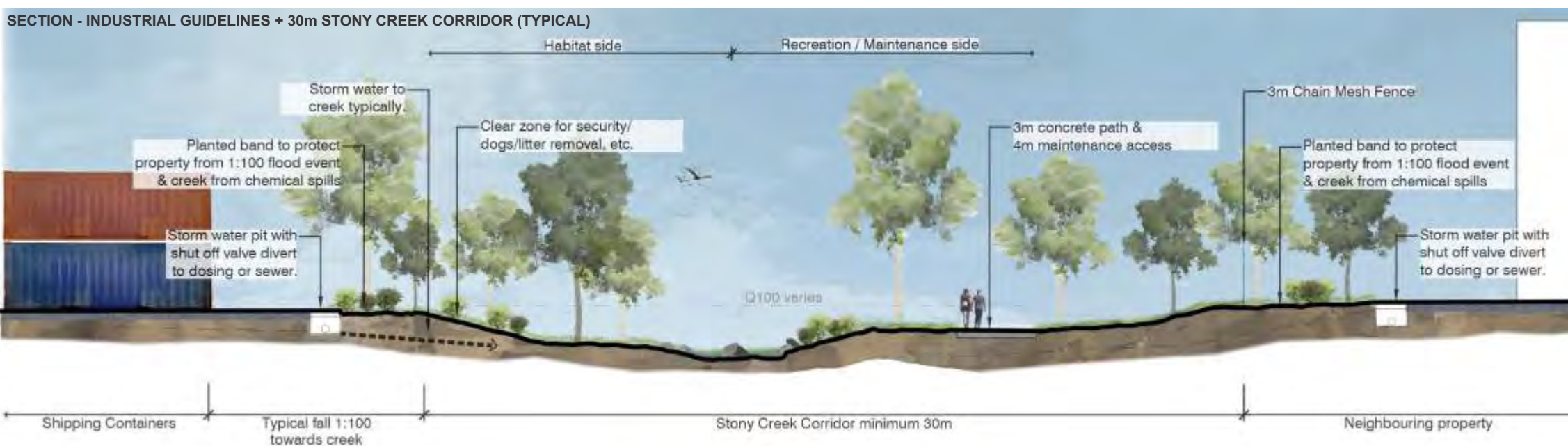
TREES, PLANTING & SOFT LANDSCAPE

- Proposed native trees planted in groups / copses of 3-7
- Proposed creek-side planting utilising native shrubs and grasses
- Proposed buffer planting with native shrubs and trees

CREEK & WATER QUALITY INFRASTRUCTURE

- Creek culvert - inaccessible to public
- Artists Impression #2 (see p.8)

	ACTIONS	TIMEFRAME
PRIORITY HIGH	3.1 Construct a footbridge at Cala Street to connect trail network	Short
	3.2 Develop and implement the Stony Creek Industrial Guidelines for adjacent properties	Short / ongoing
	3.3 Continue weed control and maintenance	Short / ongoing
	3.4 Increase tree and creek-side planting in partnership with Melbourne Water	Short / ongoing
	3.5 Ensure public access though this section is maintained and improved through public open space contributions at time of redevelopment to create min. 30m corridor	Long





Prepare guidelines for industrial interfaces with stony creek to provide built form setbacks, landscaping buffers, litter management, water quality, tree planting opportunities and public access



- (A) Built form setbacks
- (B) Landscape buffers
- (C) Public access
- (D) Planting opportunities
- (E) Water quality treatment

4 CALA STREET - GEELONG ROAD

Improve recreation and connections



LEGEND

PATHS & ACCESS

- Existing 2.5m concrete shared path (Upgrade to 3m at time of renewal)
- Proposed concrete shared path
- Proposed new sections of bike lane 1.5m wide

PARK INFRASTRUCTURE

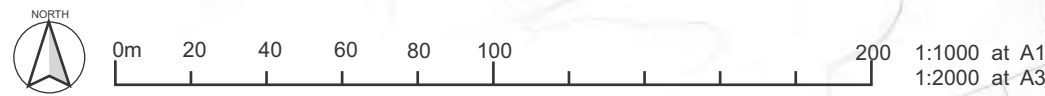
- Existing park seat
- Proposed park seat
- Existing picnic table
- Proposed picnic table
- Proposed wayfinding sign
- Existing maintenance vehicle access gate
- Proposed maintenance vehicle gate
- Existing playground

TREES, PLANTING & SOFT LANDSCAPE

- Proposed native trees planted in groups / copses of 3-7
- Proposed creek-side planting utilising native shrubs and semi-aquatics
- Proposed buffer planting with native shrubs and trees

CREEK & WATER QUALITY INFRASTRUCTURE

- Creek culvert - inaccessible to public
- Proposed raingarden for stormwater treatment



	ACTIONS	TIMEFRAME
HIGH PRIORITY	4.1 Increase tree and creek-side planting.	Short / ongoing
	4.2 Construct shared path from Waratah Street to Roberts Street. May include acquisition of adjacent property to ensure path access.	Short
	4.3 Advocate to VicRoads for cycling and pedestrian improvements to Geelong Road intersection	Short
MEDIUM PRIORITY	4.4 Expand A. MacDonal Reserve south into Council Nursery site. Remove existing chainmesh link fence. Develop basic parklands with grass and trees for kickabout space	Short
LOW PRIORITY	4.5 Construct the Bassett Reserve raingarden for stormwater treatment	Long

5 SOMERVILLE ROAD - DREW STREET BRIDGE

CRUICKSHANK PARK
Improve safety and recreation



LEGEND

PATHS & ACCESS

- Existing 2.5m concrete shared path (Upgrade to 3m at time of renewal)
- Existing secondary concrete path typically 1.5m wide
- Existing informal 900mm wide approx. gravel path retained and maintained
- Proposed 3m wide concrete shared path
- Proposed new sections of 1.5m wide concrete secondary footpath
- Proposed new sections of informal 900mm wide gravel path

PARK INFRASTRUCTURE

- Existing park seat
- Proposed park seat
- Existing picnic table
- Existing fitness equipment
- Existing playground
- Proposed picnic shelter
- Proposed nature play (indicative locations)
- Proposed distance marker at 250m intervals
- Existing wayfinding sign
- Proposed wayfinding sign
- Existing maintenance access gate
- Proposed 'discovery nature trail' markers (locations to be determined)
- Proposed LED lighting

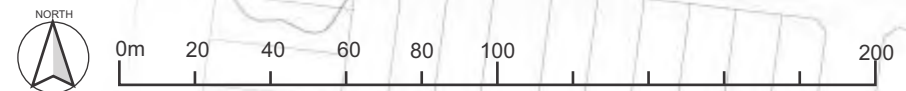
TREES, PLANTING & SOFT LANDSCAPE

- Proposed native trees planted in groups / copses of 3-7
- Proposed creek-side planting with native shrubs + grasses
- Proposed buffer planting with native shrubs and trees
- Proposed area of irrigated grass

CREEK & WATER QUALITY INFRASTRUCTURE

- Existing informal rocky crossing
- Proposed raingarden for stormwater treatment
- Potential wetland and raingarden for stormwater harvesting and irrigation
- Potential raingarden to treat local street stormwater, investigate at time of street renewal

	ACTIONS	TIMEFRAME
HIGH PRIORITY	5.1 Revegetation of creek banks in partnership with Melbourne Water	Short / ongoing
	5.2 Increased tree planting	Short / ongoing
	5.3 Construct stormwater treatment raingardens (off Bishop Street and Austin Crescent drains)	Short
	5.4 Support community-led 'Discovery Trail' project, incorporating interpretation of Stony Creek's natural and cultural heritage	Medium
MEDIUM PRIORITY	5.5 Install lighting to main bridges connected to street network	Medium
	5.6 Improve Charlotte Street playground to increase play opportunity and picnic facilities and drinking fountain	Medium
	5.7 Somerville Road frontage and urban design treatment at park entry	Medium
	5.8 Preferred location of major treatment and harvesting wetland for Cruickshank Park. Subject to further feasibility and geotechnical investigations.	Long
LOW	5.9 Install distance markers to primary 3m path to encourage and establish a Park Run for Cruickshank/McNish	Long



1:1000 at A1
1:2000 at A3

6 DREW STREET BRIDGE - FRANCIS STREET

CRUICKSHANK PARK + MCNISH RESERVE
Improve habitat, safety and recreation



	ACTIONS	TIMEFRAME
HIGH PRIORITY	6.1 Revegetation of creek banks in partnership with Melbourne Water	Short / ongoing
	6.2 Proposed toilet - 2 x universal access cubicles in single built element	Short
	6.3 Construct stormwater treatment raingarden (off Court Street drain)	Medium
	6.4 Support community-led 'Discovery Trail' project, incorporating interpretation of Stony Creek's natural and cultural heritage	Medium
MEDIUM PRIORITY	6.5 New barbecue and picnic facilities between community garden and playground	Short
	6.6 Expand the Dinosaur playground with additional play items and nature-play including improve access for all-abilities	Short
	6.7 Improve and extend BMX track with enhanced skill features and landscape setting / tree planting	Medium
	6.8 Improve Francis Street frontage and urban design treatment at park entry	Medium
	6.9 Advocate for removal of concrete channel and naturalisation of Stony Creek	Long
	6.10 Investigate irrigation using treated stormwater to improve amenity of high use lawn areas	Long
LOW PRIORITY	6.11 Install timber post + rail fence for vehicle exclusion	Short
	6.12 Construct netball half-court with shared seating / facilities and drinking fountain with BMX track	Short
	6.13 Future pedestrian bridge (subject to MW approval) with design theme to compliment McNish playspace	Long

LEGEND

PATHS & ACCESS

- Existing 2.5m concrete shared path (Upgrade to 3m at time of renewal)
- Existing secondary concrete path typically 1.5m wide
- Existing informal 900mm wide approx. gravel path retained and maintained
- Proposed 3m wide concrete shared path
- Proposed new sections of informal 900mm wide gravel path

PARK INFRASTRUCTURE

- Existing park seat
- Proposed park seat
- Existing picnic table
- Proposed picnic table
- Existing playground
- Proposed playground extension
- Proposed BBQ
- Proposed public toilet
- Proposed nature play (indicative locations)
- Proposed distance marker at 250m intervals
- Existing wayfinding sign
- Proposed wayfinding sign
- Existing maintenance access gate
- Proposed 'discovery nature trail' markers (locations to be determined)
- Proposed LED lighting

TREES, PLANTING & SOFT LANDSCAPE

- Proposed native trees planted in groups / copses of 3-7
- Proposed creek side planting with native grasses
- Proposed buffer planting with native shrubs and trees
- Proposed area of irrigated grass

CREEK & WATER QUALITY INFRASTRUCTURE

- Proposed new pedestrian bridge
- Proposed raingarden for stormwater treatment

A.I. 3 Artists Impression #3 (see p.12)



0m 20 40 60 80 100 200 1:1000 at A1
1:2000 at A3





Proposed general improvements include:

Park reconstruction

New furniture / signage

Additional tree + shrub planting

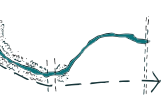
Water quality improvements

Habitat enhancements

- (A)** Advocate to naturalise concrete channel
- (B)** Upgrade path connection to Francis street
- (C)** Extend existing bike circuit / nature trail + play / netball hardcourt
- (D)** Proposed new bridge crossing
- (E)** BBQ / picnic facilities
- (F)** Proposed toilet
- (G)** Expand playground and nature play
- (H)** Install lighting to main bridges connected to street network
- (I)** Raingardens to treat stormwater

7 FRANCIS STREET - WILLIAMSTOWN RAIL LINE

Naturalising Stony Creek



LEGEND

PATHS & ACCESS

- Existing 2.5m concrete shared path (Upgrade to 3m at time of renewal)
- Proposed 3m wide concrete shared path
- Proposed new sections of informal 900mm wide gravel footpath
- Proposed elevated shared path as part of Westgate Tunnel Project
- Proposed noise barriers (varied heights) as part of Westgate Tunnel Project

PARK INFRASTRUCTURE

- Proposed park seat
- Existing wayfinding sign
- Proposed wayfinding sign
- Existing playground
- Existing Westgate Golf Course tees/greens

TREES, PLANTING & SOFT LANDSCAPE

- Proposed native trees planted in groups / copses of 3-7
- Proposed creek-side planting utilising native shrubs and grasses
- Proposed buffer planting with native shrubs and trees

CREEK & WATER QUALITY INFRASTRUCTURE

- Creek culvert - inaccessible to public road bridge
- Potential stormwater treatment wetland



0m 40 80 100 200 200 400
 1:2000 at A1
 1:4000 at A3

		ACTIONS	TIMEFRAME
PRIORITY	HIGH	7.1 Increased native tree and shrub planting 7.2 New shared path / ramps to improve connection to Federation Trail and Hyde Street Reserve (by West Gate Tunnel project)	Short / ongoing Short
	MEDIUM	7.3 Advocate for removal of concrete channel and naturalisation of Stony Creek	Long
LOW		7.4 Potential stormwater treatment wetland off Gordon Parade	Long

LEGEND

PATHS & ACCESS

- Existing 2.5m concrete shared path (Upgrade to 3m at time of renewal)
- Existing secondary concrete path typically 1.5m wide
- Existing informal 1200mm wide approx. gravel path retained and maintained
- Proposed 3m wide concrete shared path
- Proposed new sections of informal 900mm wide gravel path
- Proposed elevated shared path as part of Westgate Tunnel Project
- Proposed pedestrian bridge

PARK INFRASTRUCTURE

- Existing Park seat
- Proposed Park seat
- Existing Disc Golf Tee
- Existing Disc Golf Basket
- Proposed Disc Golf Tee
- Proposed Disc Golf Basket
- Proposed wayfinding sign
- Existing maintenance access gate

TREES, PLANTING & SOFT LANDSCAPE

- Proposed native trees planted in groups / copses of 3-7
- Proposed infill of native saltmarsh along creek banks
- Proposed buffer planting with native shrubs and trees
- Existing native grassland planting

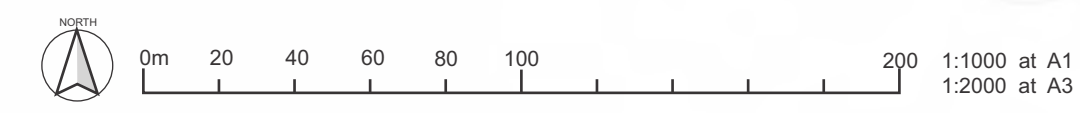
CREEK & WATER QUALITY INFRASTRUCTURE

- Proposed wetland and raingarden

EXTERNALLY OWNED OR MANAGED INFRASTRUCTURE

- Existing overhead powerlines

	ACTIONS	TIMEFRAME
HIGH PRIORITY	8.1 Improve pedestrian/cycling connections across Hyde Street (VicRoads) with traffic light or splitter island	Short
	8.2 New bridge crossing and shared path connection beneath West Gate Freeway connection to Spotswood (by West Gate Tunnel project)	Short
	8.3 New shared path/ramp connection to Federation Trail (by West Gate Tunnel project)	Short
	8.4 Tree planting along primary path, buffer planting to northern boundary (by West Gate Tunnel)	Short
MEDIUM PRIORITY	8.5 Complete disc golf course with additional baskets and signage. Ensure flight paths do not cross shared path	Short
	8.6 Improve presentation of park entry from Hyde Street	Medium
	8.7 Improve sightlines at Beverley Street entry with canopy trees and low shrub planting to create welcoming entry	Medium
	8.8 Extend secondary concrete path from Beverley Street	Medium
	8.9 Proposed timber boardwalk and platform to improve protected access to saltmarsh and creek (subject to Melbourne Water approval)	Medium
	8.10 Construct potential ephemeral wetland for stormwater treatment in Hyde Street Reserve	Long



IMPLEMENTATION PLAN

The Implementation Plan lists all actions to be undertaken as part of the Stony Creek Future Directions Plan 2020, along with their indicative timeframes and cost estimates. Prioritisation of actions have been informed through the community consultation process. Indicative timeframes for actions are: Short (1-3 years), Medium (4-6 years) and Long (7-10) years with some actions going beyond the 10 year timeframe listed as ongoing.



	ACTIONS	TIMEFRAME	COST ESTIMATE
	Develop and implement the Stony Creek Industrial Guidelines for adjacent properties		
HIGH PRIORITY	1.2 Construct sedimentation pond and wetland south of Duke Street (Melbourne Water approvals required)	Medium	\$430,000
	1.3 Develop area for habitat provision with weed removal, tree and creek-side planting – (access approvals may be required until ownership or access agreement developed.)	Medium	\$190,000
	1.4 Investigate possible litter control measures	Medium	Investigation
	1.5 Acquire land held in private ownership through open space contributions at time of redevelopment to create min. 30m corridor as shown on p.3	Long	Developer contributions
	2.1 Develop and implement the Stony Creek Industrial Guidelines for adjacent properties	Short / ongoing	n/a
	2.2 Future land acquisition for open space and road reserves. Work with private land holder to purchase / acquire land for future creekside reserve as shown on p.3.	Medium	\$8,659,500
	3.1 Construct a footbridge at Cala Street to connect trail network	Short	\$320,000
	3.2 Develop and implement the Stony Creek Industrial Guidelines for adjacent properties	Short / ongoing	n/a
	3.3 Continue weed control and maintenance	Short / ongoing	operational
	3.4 Increase tree and creek-side planting in partnership with Melbourne Water	Short / ongoing	\$140,000
	3.5 Ensure public access though this section is maintained and improved through public open space contributions at time of redevelopment to create min. 30m corridor	Long	n/a
	4.1 Increase tree and creek-side planting.	Short / ongoing	\$90,000
	4.2 Construct shared path from Waratah Street to Roberts Street. May include acquisition of adjacent property to ensure path access.	Short	\$142,000
	4.3 Advocate to VicRoads for cycling and pedestrian improvements to Geelong Road intersection	Short	advocacy
	5.1 Revegetation of creek banks in partnership with Melbourne Water	Short / ongoing	\$120,000
5.2 Increased tree planting	Short / ongoing	\$20,000 p/annum	
5.3 Construct stormwater treatment raingardens (off Bishop Street and Austin Crescent drains)	Short	\$300,000	
5.4 Support community-led 'Discovery Trail' project, incorporating interpretation of Stony Creek's natural and cultural heritage	Medium	grant funding	
6.1 Revegetation of creek banks in partnership with Melbourne Water	Short / ongoing	\$80,000	
6.2 Proposed toilet - 2 x universal access cubicles in single built element	Short	\$350,000	
6.3 Construct stormwater treatment raingarden (off Court Street drain)	Medium	\$125,000	
6.4 Support community-led 'Discovery Trail' project, incorporating interpretation of Stony Creek's natural and cultural heritage	Medium	grant funding	
7.1 Increased native tree and shrub planting	Short / ongoing	\$110,000	
7.2 New shared path / ramps to improve connection to Federation Trail and Hyde Street Reserve (by West Gate Tunnel project)	Short	WGT project	

	ACTIONS	TIMEFRAME	COST ESTIMATE
HIGH PRIORITY	8.1 Improve pedestrian/cycling connections across Hyde Street (VicRoads) with traffic light or splitter island	Short / ongoing	WGT project
	8.2 New bridge crossing and shared path connection beneath West Gate Freeway connection to Spotswood (by West Gate Tunnel project)	Short	WGT project
	8.3 New shared path/ramp connection to Federation Trail (by West Gate Tunnel project)	Short	WGT project
	8.4 Tree planting along primary path, buffer planting to northern boundary (by West Gate Tunnel)	Short	WGT project
Subtotal High Priority			\$11,076,500

	ACTIONS	TIMEFRAME	COST ESTIMATE
MEDIUM PRIORITY	1.6 Weed control, tree and creek-side planting between Quarry Road and Freight line	Medium	\$260,000
	1.7 Advocate to State Government for a cycling and pedestrian link (bridge or tunnel) between Sunshine Road and Duke Street (potential to form part of Future Airport Rail works)	Medium	advocacy
	1.8 Construct 3m wide shared path from Sunshine Road to Quarry Road (Victrack approvals required). Advocate to VicRoads for new signalised intersection across Sunshine Road	Long	\$960,000
	1.9 Improve access and maintenance connections at Sarah Grove and Justin Avenue.	Long	\$20,000
	2.3 Future potential roads, bridges and connections through Tottenham to improve business access/operation and Stony Creek connections	Long	Outside scope of this plan
	2.4 Construct 3m wide shared path from Quarry Road to Paramount Road	Long	\$882,000
	2.5 Design and develop creek-side reserve as a place for informal recreation, habitat and connections	Long	\$430,000
	2.6 Advocate for 420 Somerville Road to be rehabilitated (Fire Site) and handed over for future public open space	Long	Advocacy
	4.4 Expand A. MacDonald Reserve south into Council Nursery site. Remove existing chainmesh link fence. Develop basic parklands with grass and trees for kickabout space	Short	\$300,000
	5.5 Install lighting to main bridges connected to street network	Medium	\$173,000
	5.6 Improve Charlotte Street playground to increase play opportunity and picnic facilities and drinking fountain	Medium	\$415,000
	5.7 Somerville Road frontage and urban design treatment at park entry	Medium	\$90,000
	5.8 Preferred location of major treatment and harvesting wetland for Cruickshank Park. Subject to further feasibility and geotechnical investigations.	Long	\$1,890,000
	6.5 New barbecue and picnic facilities between community garden and playground	Short	\$80,000
	6.6 Expand the Dinosaur playground with additional play items and nature-play including improve access for all-abilities	Short	\$120,000
	6.7 Improve and extend BMX track with enhanced skill features and landscape setting / tree planting	Medium	\$150,000
	6.8 Improve Francis Street frontage and urban design treatment at park entry	Medium	\$130,000
	6.9 Advocate for removal of concrete channel and naturalisation of Stony Creek	Long	advocacy
6.10 Investigate irrigation using treated stormwater to improve amenity of high use lawn areas	Long	\$80,000	

	ACTIONS	TIMEFRAME	COST ESTIMATE
MEDIUM PRIORITY	7.3 Advocate for removal of concrete channel and naturalisation of Stony Creek	Long	Advocacy
	8.5 Complete disc golf course with additional baskets and signage. Ensure flight paths do not cross shared path	Short	\$40,000
	8.6 Improve presentation of park entry from Hyde Street	Medium	\$135,000
	8.7 Improve sightlines at Beverley Street entry with canopy trees and low shrub planting to create welcoming entry	Medium	\$30,000
	8.8 Extend secondary concrete path from Beverley Street	Medium	\$15,000
	8.9 Proposed timber boardwalk and platform to improve protected access to saltmarsh and creek (subject to Melbourne Water approval)	Medium	\$180,000
	8.10 Construct potential ephemeral wetland for stormwater treatment in Hyde Street Reserve	Long	\$220,000
	Subtotal Medium Priority		

	ACTIONS	TIMEFRAME	COST ESTIMATE
LOW PRIORITY	4.5 Construct the Bassett Reserve raingarden for stormwater treatment	Long	\$240,000
	5.9 Install distance markers to primary 3m path to encourage and establish a Park Run for Cruickshank/McNish	Long	\$13,000
	6.11 Install timber post + rail fence for vehicle exclusion	Short	\$10,000
	6.12 Construct netball half-court with shared seating / facilities and drinking fountain with BMX track	Short	\$90,000
	6.13 Future pedestrian bridge (subject to MW approval) with design theme to compliment McNish playspace	Long	\$700,000
	7.4 Potential stormwater treatment wetland off Gordon Parade	Long	\$250,000
Subtotal Low Priority			\$1,303,000

TOTAL			\$18,979,500
--------------	--	--	---------------------