



NEW FOOTSCRAY HOSPITAL AND EDUCATION PRECINCT ADVOCACY PLAN



ADOPTED 26 NOVEMBER 2019

1 – ACCESSIBILITY

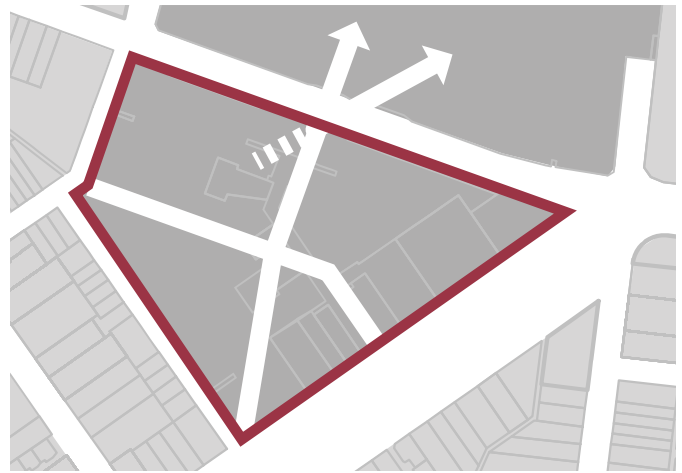
Prioritise active and sustainable transport to create an accessible precinct

Walking

- Deliver pedestrian and cycling improvements to the Geelong / Ballarat Road intersection including new wide and direct pedestrian crossings, the closure of both left-turn slip lanes and the conversion of Mills Close into a left-in, left-out shared zone.
- Enhance the Nicholson Street pedestrian spine with upgraded lighting and an upgraded crossing of the Footscray Ring Road at Donald Street.
- Enhance Tiernan Street to become a welcoming entrance to the new hospital, VU & Footscray Park.
- Ensure new hospital entries and through-site pedestrian connections are located to maximise permeability, provide flexibility and a choice of routes to surrounding destinations.
- Ensure pedestrian access is not compromised by new hospital's vehicle access and drop-off areas.
- Reduce vehicle speed limits to 30kph in the Geelong Road Service Lanes.
- Reduce speed limits along Ballarat Road between Tiernan Street and Geelong Road to make walking safer.
- Reduce vehicle speed limits to 30kph across the Footscray Central Activities Area and Footscray Learning precinct to make walking safer for children, shoppers and businesses.
- Reduce vehicle speed limits to 10kph within the Footscray Ring Road to actively discourage any unnecessary through-traffic from Hopkins and Barkly Streets.
- Enhance the Geelong Road Boulevard by expanding footpaths, reducing vehicle slip lanes, avoiding the use of armco and wire rope safety barriers, and investing in tree planting, street furniture and lighting to create an attractive, safer and cooler urban realm.
- Support an open air, publically accessible pedestrian bridge linking VU to the new hospital to complement improved signalised crossing opportunities along Ballarat Road.
- Support an underground pedestrian connection between VU and the new hospital whilst ensuring Ballarat Road is enhanced as a pedestrian friendly streetscape.

Key Projects:

- Intersection upgrade of Geelong / Ballarat Road
- Nicholson Street upgrade incl. Donald Street
- Tiernan Street upgrade
- Geelong Road Boulevard



Accessibility:

Locate entries and through-site links to maximise permeability and connectedness to tram and bus stops and key pedestrian routes



Ballarat / Geelong Road intersection concept:

New wide and direct pedestrian crossings and removal of slip lanes to prioritise pedestrian movement



Pedestrian bridge: Melbourne Quarter Sky Park

An open air, publically accessible green link connected to adjacent buildings and the pedestrian friendly streetscape below



Boulevard Transformation: Lonsdale Street, Danenong

Enhanced public realm outcomes within the service lanes have transformed Lonsdale Street



Nicholson Street protected cycle lanes concept
Kerb extensions and raised thresholds will prioritise cycling along Nicholson Street without the removal of existing street trees



Tram terminus: Acland Street, St Kilda
Dual tram platforms will be required in Leeds Street at Footscray Station to cater to higher frequency low-floor trams



Public Transport Network Enhancements
New accessible tram stops serviced by more frequent tram services and complemented by high frequency bus services connecting the new hospital bus super stop to Footscray Station

Cycling

- Deliver protected cycle lanes along Nicholson Street between Geelong Road and Barkly Street.
- Deliver dedicated cycle crossings of Geelong and Ballarat Roads.
- Provide priority cycle access and facilities at new hospital entries that are not compromised by vehicle access and drop-off areas.
- Provide state-of-the-art end of trip cycle facilities for all staff and visitors.

Key Projects:

- Intersection upgrade of Geelong / Ballarat Road
- Nicholson Street protected cycle lanes

Public Transport

- Ensure early delivery of public transport enhancements to establish sustainable movement patterns in returning VU students and cater to construction workers of the new hospital.
- Bring forward the upgrade of Tram Route 82 between Footscray and the Maribyrnong Defence Site and deliver accessible tram stops at Farnsworth Avenue, along Droop Street at Tiernan Street, Geelong Road (north side) and Nicholson Street and at the Leeds Street Terminus.
- Increase the service frequency of Tram Route 82 tram to every 6mins in the AM and PM peaks including the upgrade of the Leeds Street terminus to two platforms.
- Enhance the frequency and hours of operation of the VU shuttle bus service to cater to construction workers and hospital staff.
- Deliver a high frequency PTV Express Bus direct from Footscray Station to the new hospital and VU.
- Coordinate the route alignments, bus stop locations and timetables of Bus Routes 223, 406, 409 and 472 which all currently serve Footscray Station and run in the vicinity of the new hospital and VU.

Key Projects:

- Accessible Tram Stops - Farnsworth Avenue, Tiernan Street, Geelong Road and Nicholson Street
- Leeds Street Tram Terminus
- Irving Street Bus Interchange
- VU / New Footscray Hospital Bus Port

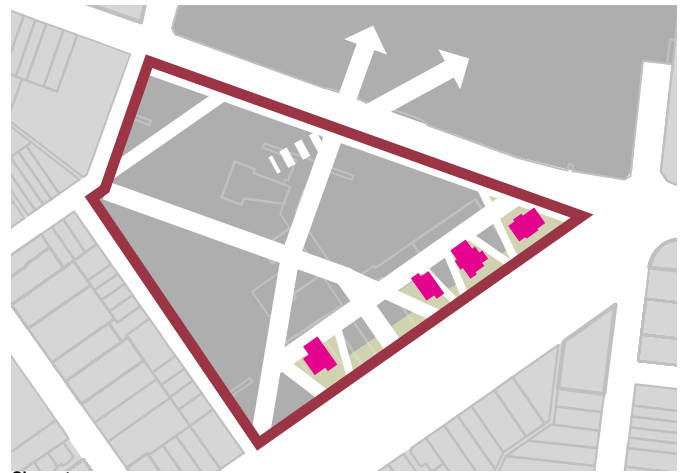
2 – URBAN CHARACTER

Respond to the unique urban character of the precinct

- Retain, adapt and integrate the four heritage houses as retail or 'eat-street' opportunities with frontages to the rear and restored formal gardens for use as outdoor dining areas or passive recreation spaces facing Geelong Road.
- Deliver a network of internal atrium and open air connections that respond to Footscray town centre's fine grain grid of streets, laneways and arcades.
- Deliver high quality, responsive architecture.
- Orient patient wards and internal and external communal spaces to take advantage of views and the green outlook north over Footscray Park and east towards the CBD.
- Integrate the new hospital with the Footscray Park greenspace and Maribyrnong River by enhancing the 'green link' through VU.
- Enhance the Geelong Road Boulevard as a grand formal address for the new hospital by expanding footpaths, reducing vehicle slip lanes, avoiding the use of armco and wire rope safety barriers, and investing in tree planting, street furniture and lighting to create an attractive, safer and cooler urban realm.
- Create active, quality edges for pedestrians along all four street frontages.
- Minimise vehicle crossovers of street edges and locate loading within basements or structure
- Locate car parking in basement levels to facilitate site permeability and activation of ground floor and podium level spaces.
- Ensure an appropriate, lower, built form response and transition towards Federal Street and the edges of the Activity Centre.

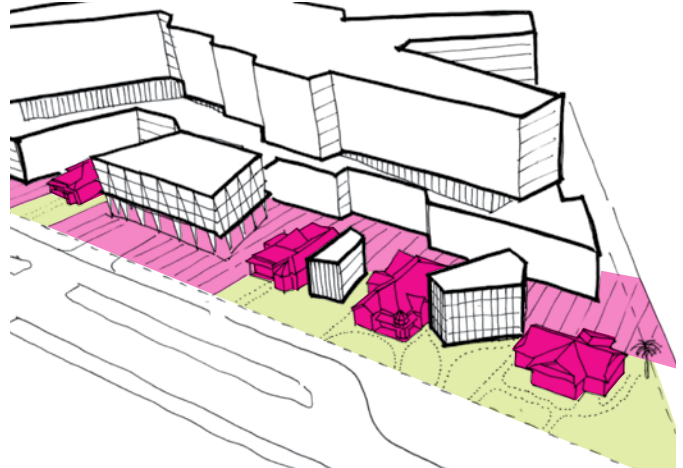
Key Projects:

- Retained and adaptively reused heritage houses
- A network of internal atrium and open air connections through the hospital site connecting to VU and surrounding streets
- Direct 'green link' connection through VU to Footscray Park
- A grand Geelong Road Boulevard and strong hospital presence



Character:

All four heritage houses retained and integrated within a fine grain network of open air and internal atrium connections reflecting the grit and grain of Footscray



'Eat-street' concept:

Heritage houses retained and repurposed as cafes and restaurants surrounded by formal gardens and contemporary urban landscapes and interspersed with modern glazed pavilions



Adapted heritage buildings: Spice Alley, Chippendale (NSW)



Modern pavilions: Green Square, Zetland (NSW)

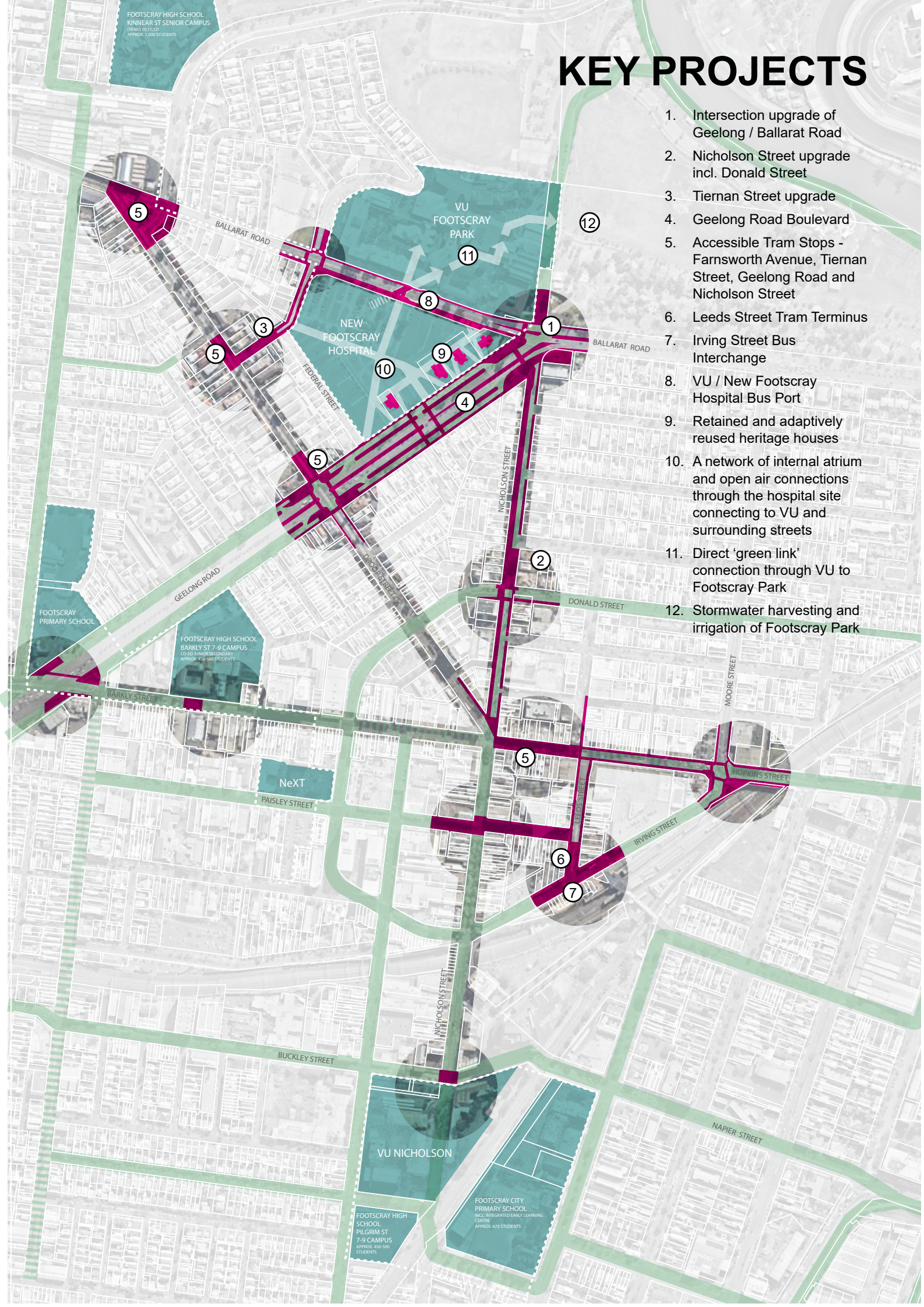


Grand Boulevard: Royal Parade, Parkville

The formal boulevards of Royal Parade and Flemington Road provide a high quality and pedestrian friendly setting for Melbourne's major hospitals

KEY PROJECTS

1. Intersection upgrade of Geelong / Ballarat Road
2. Nicholson Street upgrade incl. Donald Street
3. Tiernan Street upgrade
4. Geelong Road Boulevard
5. Accessible Tram Stops - Farnsworth Avenue, Tiernan Street, Geelong Road and Nicholson Street
6. Leeds Street Tram Terminus
7. Irving Street Bus Interchange
8. VU / New Footscray Hospital Bus Port
9. Retained and adaptively reused heritage houses
10. A network of internal atrium and open air connections through the hospital site connecting to VU and surrounding streets
11. Direct 'green link' connection through VU to Footscray Park
12. Stormwater harvesting and irrigation of Footscray Park



FOOTSCRAY HIGH SCHOOL
KINNAR ST SENIOR CAMPUS
YEARS 10-11/12
APPROX. 3,000 STUDENTS

VU
FOOTSCRAY
PARK

NEW
FOOTSCRAY
HOSPITAL

FOOTSCRAY
PRIMARY SCHOOL

FOOTSCRAY HIGH SCHOOL
BARKLY ST 7-9 CAMPUS
CO-ED INDEPENDENT
APPROX. 450-500 STUDENTS

NeXT

VU NICHOLSON

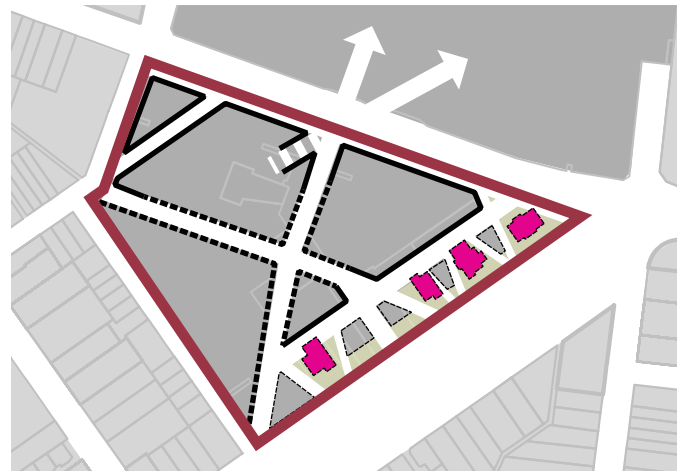
FOOTSCRAY HIGH
SCHOOL
PILGRIM ST
7-9 CAMPUS
APPROX. 450-500
STUDENTS

FOOTSCRAY CITY
PRIMARY SCHOOL
INCL. INTEGRATED EARLY LEARNING
CENTRE
APPROX. 675 STUDENTS

3 – ECONOMIC PROSPERITY

Maximise economic development opportunities across the precinct

- Strengthen connections with the Footscray Central Activity Area to encourage staff, patients and visitors to take advantage of the goods and services on offer.
- Encourage the provision of hotel, conference centre and office/incubator/startup spaces.
- Develop marketing partnerships with local businesses and business groups during construction and at project completion.
- Locate active uses towards external streets and forecourts and internal links to maximise pedestrian activity and safety.



Activity:
Focus active uses All four heritage houses retained and integrated within a fine grain network of open air and internal atrium connections reflecting the grit and grain of Footscray



Conference facilities: Royal Childrens Hospital Auditorium
source: Billard Leece Partnership



Key Projects:

- Strong connections to the goods and services within Central Footscray
- Shared hotel, conference facility and office spaces for the precinct
- Active uses to all street frontages, entry plazas and internal links



Larwill Art Hotel, Royal Childrens Hospital, Parkville:
Hotel delivered as part of a new hospital



Co-working spaces

4 – SUSTAINABLE DEVELOPMENT

Enhance precinct sustainability outcomes

- Ensure the new hospital is designed and constructed to a 6-star rating.
- Ensure the new hospital contributes towards the delivery of a climate neutral precinct
- Harvest and treat stormwater on site for the irrigation of Footscray Park.
- Enhance pedestrian and visual linkages to Footscray Park
- Maximise street tree and urban forest planting across the precinct to achieve a minimum of 20% canopy cover across the public realm, and 80% across streets and public plazas at maturity.
- Maximise the use of green roofs and green walls for their health and cooling benefits.
- Explore precinct approaches to energy, water and waste.
- Encourage the reduction of waste via the Circular Economy.



Water Sensitive Urban Design: Dawson Street Precinct, Sunshine
Urban swales treat stormwater runoff and provide opportunities for planting, feature lighting and play. This swale includes two pedestrian bridges and rocks allowing kids to jump across



Green Roof: Victorian Comprehensive Cancer Centre, Parkville
This green roof provides grass and trees for shade. A mixture of areas allow for relaxation as well as outdoor dining



Increased tree canopy cover: Commercial Road, Footscray
Many of Footscrays residential streets contain mature street trees with their canopies meeting over the road

Key Projects:

- Stormwater harvesting and irrigation of Footscray Park
- 80% tree canopy cover across new and upgraded streets and spaces
- 100% green roof
- 6-star New Hospital buildings
- Climate positive precinct

5 – HEALTHY COMMUNITY

Enhance health and wellbeing outcomes across the precinct

- Consider the new hospital as a part of a Wellness Precinct including palliative care, mental health, preventive care, Maternal and Child Health Services.
- Provide destinations and services for the local community including an Early Years Hub.
- Capitalise on the opening of the West Gate Tunnel to reduce truck movements through the precinct.
- Embed Footscray Community Arts Centre (FCAC) and community arts into the new hospital.



Wellness:
Provide services and activities in the new hospital for residents of the precinct



Capitalise on truck bans:
24hr truck bans will be implemented on Moore Street in 2022 to coincide with the opening of the Westgate Tunnel.



Footscray Community Arts Centre

Key Projects:

- Early Years Hub within the new hospital
- Reduced truck movements through the precinct
- FCAC embedded in the hospital experience



Interactive artwork: Interactive video wall by Ouva, Monash Childrens Hospital

6 – PARTNERSHIPS & COLLABORATION

Build strong precinct partnerships

- Ensure the New Footscray Hospital strengthens Footscray University Town (FUT) relationships and contributes towards realising the shared vision with VU.
- Integrate Western Health into the FUT partnership.
- Contribute data to the Smart Cities for Social Cohesion partnership between Council and VU.
- Maximise the potential opportunities of the Footscray Learning Precinct.
- Explore partnership opportunities with the Footscray Community Arts Centre (FCAC).



Footscray University Town: A shared vision



Expand the Footscray University Town partnerships to include Western Health



Footscray Community Arts Centre



STEAM Learning Labs