

# PASSPORT TO



This Passport to Play celebrates simple, no-cost ideas for play in your local neighbourhood.

It was co-designed by children for children.

Feel free to write and draw your thoughts and ideas on the pages.

**We love to PLAY!**

Here is the land, here is the sky. Here are my friends and here am I.

We thank the people of the Kulin Nation for the land on which we play and learn.

Hands up, hands down, we're on Kulin Nation ground.



Wurundjeri  
Woi-wurrung  
Cultural Heritage  
Aboriginal Corporation

### **Acknowledgement**

Council is proud to represent a municipality filled with important and significant Aboriginal history. It acknowledges the Traditional Custodians of this land, the Kulin Nation, and acknowledges the rich culture and considerable contributions Aboriginal and Torres Strait Islander Peoples have made and continue to make to this City.



Where are your favourite places to play?











Draw an **X** to mark the spot!



The Maribyrnong River is a sacred resource that we should all look after. Its health relates to our health.



## KEY

-  Arts Precinct
-  Library
-  Open space
-  Maribyrnong Aquatic Centre
-  Parklet
-  Playground
-  Rec/West Braybrook & Footscray
-  Shopping
-  Train station
-  Walking / bike track

**Disclaimer:** All due care has been taken to prepare this map and its contents. However, Maribyrnong City Council does not accept liability for any statements, opinions, errors or omissions contained herein.



# WE LIKE TO PLAY...

WITH

My cat

Dad

On my own

Brother

Dog

Cousins

Friends

Grandpa



Sister

Mum



Butterflies

Draw in here!



Who do you like to play with?

WHERE

Kinder

My room

Home

Beach

Playground

School

Park

Outside

Creek

Garden



Draw in here!



Where do you like to play?

# WHAT DO YOU LIKE TO PLAY?

Jumping



Running

Bouncing  
Smelling



Laughing · Inventing



Roaring

Swinging



Spinning



Exploring

Imagining · Wondering · Painting



# PRETEND I AM...

Stranded on an island

Dancing on stage

Preparing a feast

Pretending to be a cat

Jumping over lava



What do you like to pretend when you play?

# HIDE AND SEEK

Peek-A-Boo!



Waa



I climbed up here by myself

Draw in here!



Where do you like to play hide and seek?



# MAKE AND BUILD



What do you make and build?



# NATURE PLAY



Jumping over the creek is really fun



I love running through the grass



Outside in the rain and mud



I like the way it feels on my hands



Bunjil



Draw in here!



How do you play in nature?



# IDEAS TO PLAY BY YOURSELF



Finding a shape in the clouds

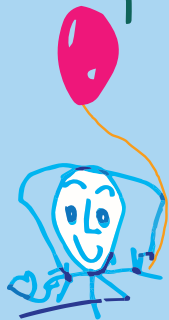


Juggling

Basketball in the park



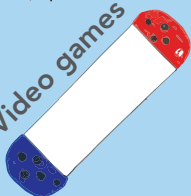
Playing with my balloon in the rain



Reading a story



Video games



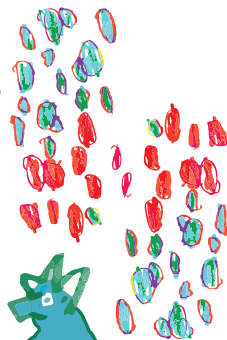
What do you like to play by yourself?

Draw in here!



Sliding down the slide

Blowing bubbles





Eye spy

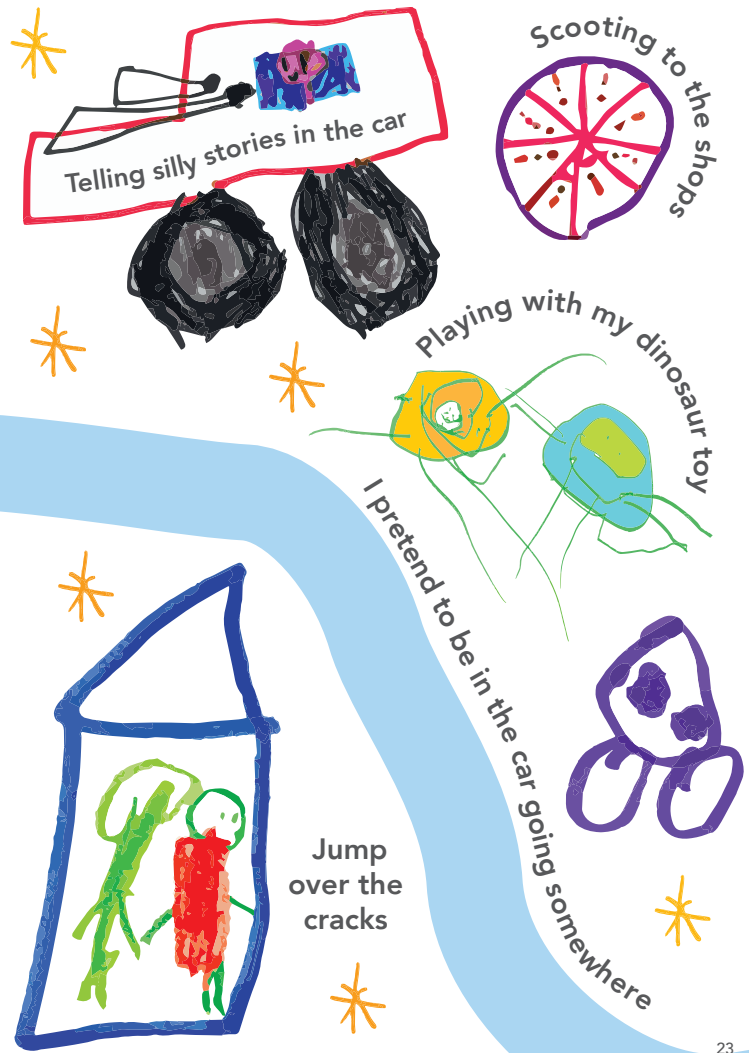
PLAY ON YOUR WAY



Draw in here!



What do you like to play on your way?



Telling silly stories in the car

ScOOTING to the shops

Playing with my dinosaur toy

I pretend to be in the car going somewhere

Jump over the cracks



# IDEAS TO PLAY WITH OTHERS



Goal!



Tag

you're

it

Jump rope



Kick to kick



Marngrook



What are your favourite things to play with others?



Draw in here!



A treasure hunt



Wrestling with my sister



Pots and pans musical band



# MORE PLAY IDEAS



What's  
your top  
5 play  
ideas?

1

---

2

---

3

---

4

---

5

---

# PLAY IS IMPORTANT BECAUSE...



To be fit and healthy • You can play however you want • We play for care and we play for fun  
So people can play with you for fun • To make friends • If you've had a bad day  
It's a good way to connect with people • For learning • For exercise and mental health  
It makes me happy • You learn what's happening cause you get tired • You learn what's happening right now  
It helps you express yourself • Helps you sleep better

Why is play important to you? 



Draw in here!



The Passport to Play was co-designed by a group of Leadership Students from Footscray Primary School, along with Early Years at Maribyrnong City Council, and asked what, where and with whom children liked to play.

As children are the experts in play, their voices, opinions and ideas are essential. After consulting with hundreds of children from birth to 12 years across the City of Maribyrnong, this resource was designed to promote the joy, health, wellbeing, cultural understanding, learning and development of our children and families through play.

To find out more about the Passport to Play Project, scan the QR code or head to:  
[www.maribyrnong.vic.gov.au/PassportToPlay](http://www.maribyrnong.vic.gov.au/PassportToPlay)



CONGRATULATIONS,  
YOU ARE NOW A  
**PLAY  
EXPERT!**





## Maribyrnong City Council

Mail address: PO Box 58, West Footscray VIC 3012  
Phone: 9688 0200  
Email: [email@maribyrnong.vic.gov.au](mailto:email@maribyrnong.vic.gov.au)  
Website: [www.maribyrnong.vic.gov.au](http://www.maribyrnong.vic.gov.au)



**TIS 131 450**

If you are deaf, hearing-impaired, or speech-impaired, please use the National Relay Services



**TTY 133 677**

Speak and listen **1300 555 727** [www.relayservice.com.au](http://www.relayservice.com.au)

## Connect with us



[/maribyrnongcc](https://twitter.com/maribyrnongcc)



[/Maribyrnong](https://www.facebook.com/Maribyrnong)



[cityofmaribyrnong](https://www.instagram.com/cityofmaribyrnong)

